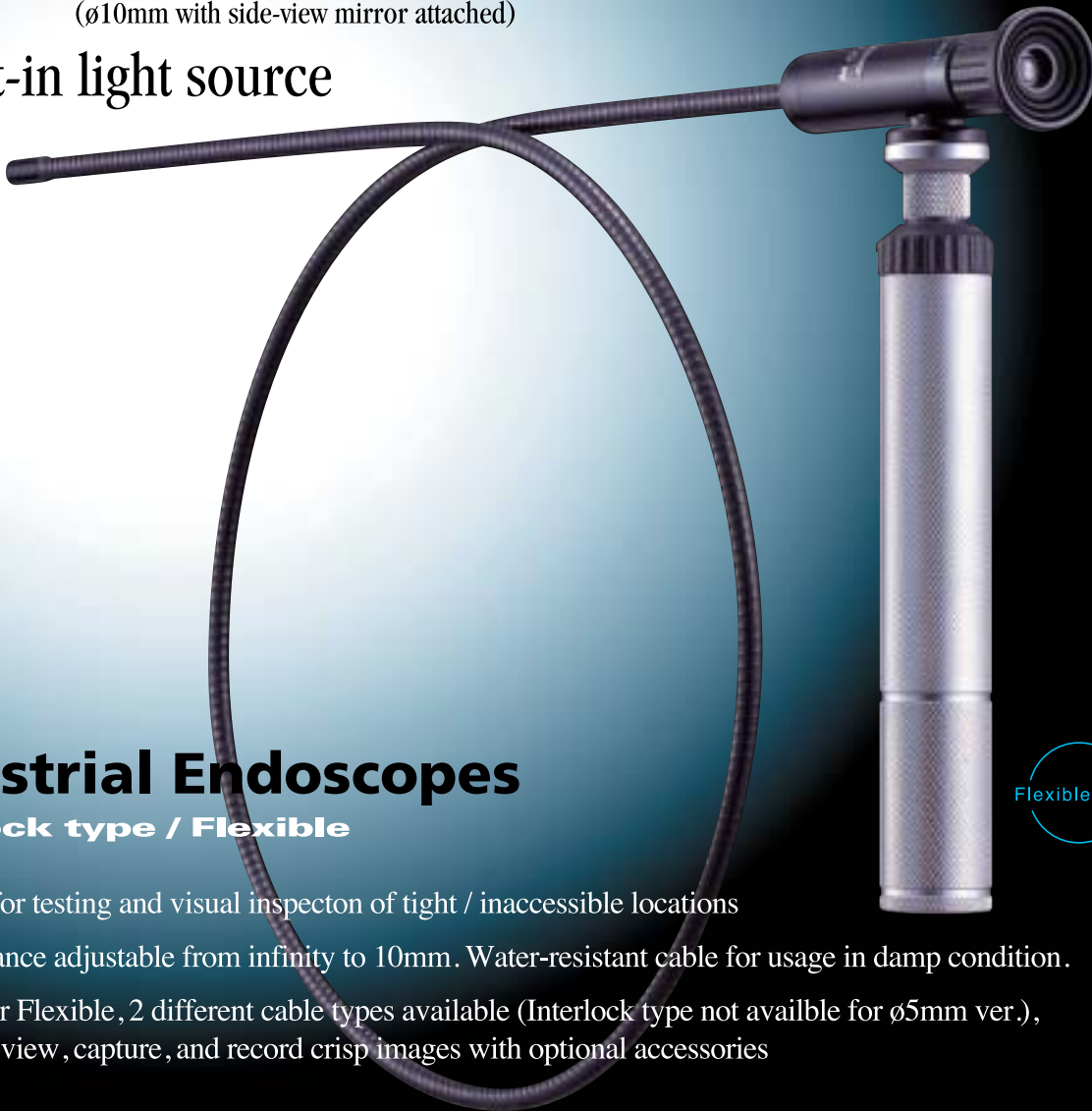


# LightScope Industrial Endoscopes



Designed for testing and visual inspection of tight / inaccessible locations

- 19,000 Lux
- Field Angle 60°
- Tip diameter  $\varnothing 5\text{mm}$  <sup>NEW</sup>,  $\varnothing 8\text{mm}$   
( $\varnothing 10\text{mm}$  with side-view mirror attached)
- Built-in light source



## Industrial Endoscopes

**Interlock type / Flexible**

Flexible Type

Designed for testing and visual inspection of tight / inaccessible locations

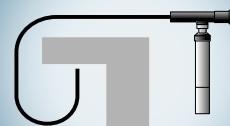
Focus distance adjustable from infinity to 10mm. Water-resistant cable for usage in damp condition.

Interlock or Flexible, 2 different cable types available (Interlock type not available for  $\varnothing 5\text{mm}$  ver.),  
All digital-view, capture, and record crisp images with optional accessories

### Main Applications

<b>Automobiles</b>	Engines, Transmissions, Differentials, Air conditioners
<b>Industrial Machinery</b>	Engines, Transmissions, Inside hydraulic pipes
<b>Gas</b>	Inside pipes and exhaust openings
<b>Air &amp; Spacecraft</b>	Turbine blades, Combustion chamber interiors, Rocket engines
<b>Sewers</b>	Inside pipes, Toilet clogs, Other plumbing problems
<b>Petrochemical Plants</b>	Process plumbing, Water supply pipes, Pressure storage tanks,
<b>Vessels</b>	Boiler interiors, Turbine interiors, Diesel engines

#### Interlock type



Flexible type

#### Flexible type



Flexibility for insertion in pipes and other locations

# Accessory

## Light Guide

Effectively send light from lighting system to scope (flexible type)



## Lighting System

Bright, stable light source in compact design



## C-mount Adapter

Adapter for attaching C-mount CCD camera



## Side View Adapter (90°)

View pipe inner walls & other surfaces

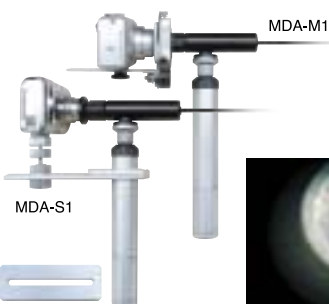


## Spare bulb

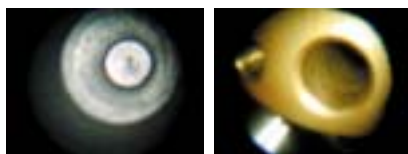
3.5V 0.7A 2.55W



## Digital Camera Adapter NEW



Allows you to connect a wide range of digital cameras to LightScope/BoreScope and to watch, store and file images taken with the camera.



## Standard Package

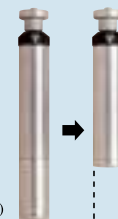
### Hard-Case

For scope protection & portability



### Battery Handle Lighting

Handle length can be shortened

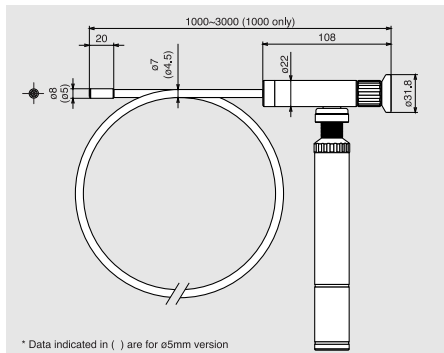


3 x C-cell batteries (long state)  
2 x C-cell batteries (short state)

## BoreScope

BoreScope

External diameter available from 2.4mm~6.35mm. Clear image and low-cost achieved by using relayed rod lenses. Attachable with Digital Camera Adapter



Category	Type	Interlock				Flexible <span style="color:red">NEW</span>				
		Plastic		Glass	Plastic		Glass	Plastic		
Fiber material		Plastic		Glass	Plastic		Glass	Plastic		
Model		MSPI 1000III	MSPI 2000III	MSPI 3000III	MSGI 1350III	MSPS 1000III	MSPS 2000III	MSPS 3000III	MSG5 1350III	MSHS 1000III
Number of pixels		3500			10000	3500			10000	7400
Tip diameter		ø 8			ø 8	ø 8			ø 8	ø 5
Fiber diameter		35nm			—	35nm			—	15nm
Lamp		3.5V 0.7A 2.55W								
Power		3 C-cell batteries (Sold separately) [Provides continuous light for 3 hours (when alkaline batteries used)]								
Viewing angle		Direct (Side view optional)								
Angle of view		60°								
Focus distance		10mm to Infinity								
Water resistance		Water-resistant to 1~1.3 atmospheres (1013-1317hPa)								
Working temperature		-20°C ~ +60°C								
Material		SUS Interlock + PVC cover				SUS flexible + PVC cover				
Minimum bend radius		100mm or larger				40mm or larger				
Effective length (Water-resistant case supplied)		1000mm	2000mm	3000mm	1350mm	1000mm	2000mm	3000mm	1350mm	1000mm

Not for medical applications

Contact us for more information

\*Specification and appearance may be modified without notice in order to implement improvements.



**MORITEX CORPORATION** Overseas Sales Group  
6F, Mitsuhashi Bldg., 1-4-3 Azamino, Aoba-ku, Yokohama 225-0011 Japan  
Phone +81-(0)45-909-4733 FAX +81-(0)45-909-4707  
Homepage <http://www.moritex.co.jp/> Email : [customer@moritex.co.jp](mailto:customer@moritex.co.jp)

**MORITEX U.S.A. INCORPORATED**  
6862 Santa Teresa Blvd., San Jose, CA 95119 U.S.A.  
Phone +1-408-363-2100 FAX +1-408-363-9980  
Homepage <http://www.moritexusa.com/> Email : [sales@moritexusa.com](mailto:sales@moritexusa.com)

**MORITEX Europe Ltd.**  
14 Signet Court, Swanns Road, Cambridge, CB5 8LA, United Kingdom  
Phone +44-01223-301148 FAX +44-01223-301149  
Homepage <http://www.moritex.com/> Email : [info@moritex.com](mailto:info@moritex.com)

**MORITEX (Hong Kong) Co., Ltd.**  
3F Richwealth Industrial Bldg., 77-87 Wang Lung Street  
Tsuen Wan, New Territories, Hong Kong  
Phone +852-2439-0968 FAX +852-2439-0377